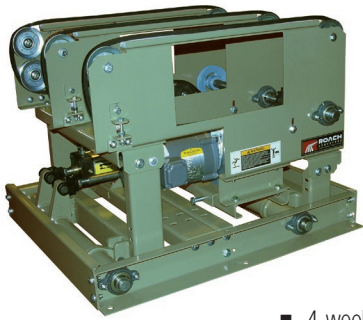


MODEL VBT3 & WT3

90° 3-STRAND V- BELT TRANSFER



■ 4 week shipment

PRICES INCLUDE

- **TRANSFER ARM:** 10 ga. formed channel
- **TRANSFER BELT:** "B" section V-belt
- **V-BELT CENTERS:** 18"
- **CENTER DRIVE:** allows reversible unit operation
- **LIFT:** 1" positive
- **BEARINGS:** heavy duty, lubricated, ball bearing unit with cast iron housings
- **BELT SPEED:** 60 fpm constant. Consult factory for optional speeds
- **CAPACITY:** unit load not to exceed 500 lbs.
- **AIR CONTROLS:** air chambers with single solenoid valve
- **1/2 HP SUPER E MOTOR (230/460/3)**

LENGTH	PRICE	WT. (LBS.)
3'	\$7,180	395
4'	\$7,433	440
5'	\$7,691	485
6'	\$7,943	530
7'	\$8,197	575
8'	\$8,449	620

OPTIONAL SPEEDS

HP	SPEED									
	30	40	50	60	70	80	90	100	110	120
1/2	\$150	\$150	\$150	N/C	N/C	N/C	N/C	N/C	N/C	N/C
3/4	\$598	\$318	\$318	\$216	\$216	\$217	\$142	\$142	\$142	\$142
1	\$923	\$556	\$485	\$369	\$271	\$272	\$271	\$272	\$248	\$195

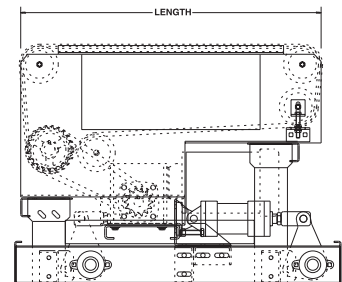
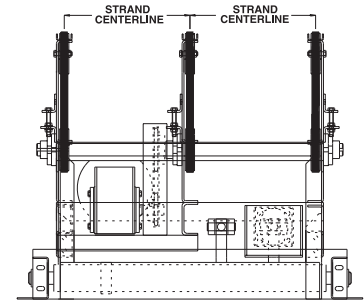
Prices in charts are for optional speeds other than 1/2 HP SUPER E Motor (230/460/3).

OPTIONAL MOTORS

MOTOR SERIES	SUPER "E"	SUPER "E" ODP	INVERTER [®] DUTY	DC*		BRAKE	WASHDOWN	
VOLTAGE	230/460/3	115/230/1	230/460/3	90V	180V	230/460/3	230/460/3	
HP	1/2	N/A	\$120.40	\$196.00	\$543.20	N/A	\$1,092.00	\$599.20
	3/4	N/A	\$200.20	\$210.00	N/A	\$746.20	\$1,271.20	\$616.00
	1	N/A	\$260.40	\$1,132.60	N/A	\$1,015.00	\$1,288.00	\$637.00

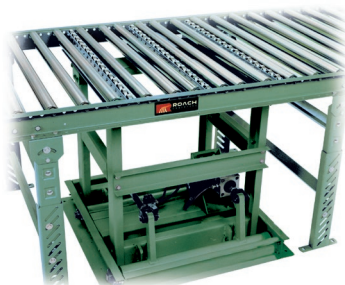
* Prices do not include controller. See Electrical Component Controls for pricing.

All Super E brake standard with 230/460/1 brake coils.



MISCELLANEOUS POWER CONVEYORS

90° 3-STRAND SKATE WHEEL TRANSFER



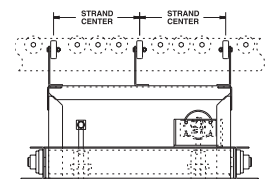
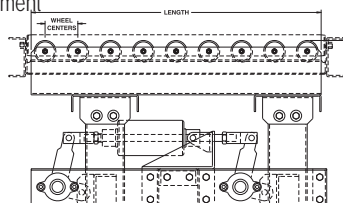
Shown mounted in optional conveyor

■ 4 week shipment

PRICES INCLUDE

- **TRANSFER ARM:** 7 ga. formed channel
- **TRANSFER WHEELS:** Frantz model 35Z on 3" wheel centers, 50 lbs. capacity rating
- **STRAND CENTERS:** 18"
- **LIFT:** positive type lift with 1" of net lift
- **BEARINGS:** heavy duty, lubricated, ball bearing unit with cast iron housings
- **MOUNTING:** integral part of unit, with 15" top of wheel elevation (down position); unit designed to mount between conveyor frames
- **CAPACITY:** unit load not to exceed 500 lbs.
- **AIR CONTROLS:** air chambers with single solenoid valve

LENGTH	PRICE	WT. (LBS.)
2'	\$3,767.40	377
3'	\$3,997.00	409
4'	\$4,228.00	420
5'	\$4,457.60	452



*Weights shown are US pounds.

