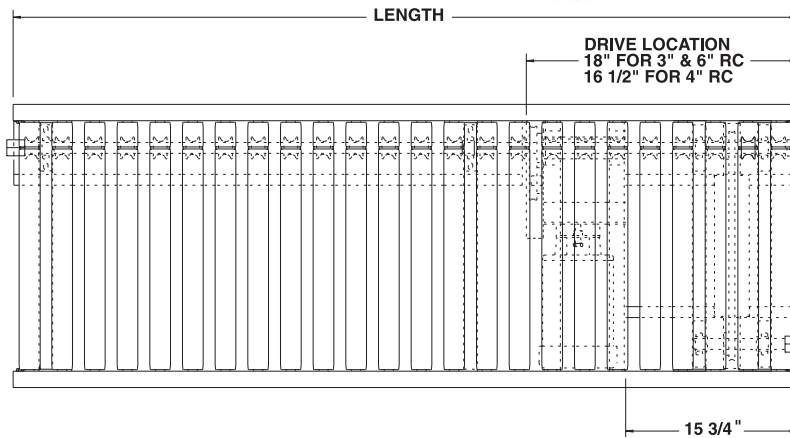


# MODEL 796LSX LINE SHAFT CROSS-OVER MODULE

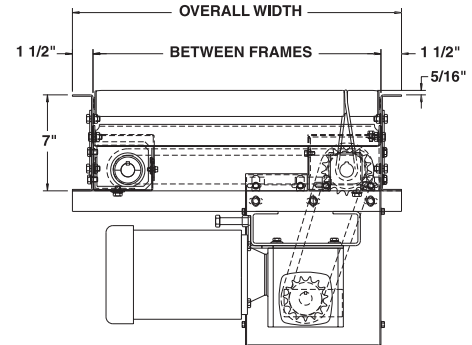


Conveyor shown with optional supports

Roach cross-over module 796LSX was designed to offer a standard component to eliminate confusion over cross-overs. Roach model 796LSX is the only component required to cross over drive shaft.



SPECIFY MODEL NUMBER PER EXAMPLE  
796LSX-21-3-10-R  
796LSX-(between frames)-(roller centers)-(length)-  
(left or right)



| RC  | 3"               | 4"  | 6"  | 3"                 | 4" | 6" |
|-----|------------------|-----|-----|--------------------|----|----|
| BF  | 10' UNIT WEIGHTS |     |     | UNIT WEIGHTS / FT. |    |    |
| 15" | 455              | 427 | 389 | 26                 | 23 | 20 |
| 19" | 487              | 453 | 419 | 29                 | 25 | 22 |
| 21" | 507              | 470 | 433 | 31                 | 27 | 24 |
| 25" | 536              | 494 | 451 | 35                 | 31 | 27 |
| 27" | 558              | 513 | 468 | 37                 | 33 | 28 |
| 33" | 601              | 548 | 495 | 43                 | 39 | 32 |
| 39" | 657              | 595 | 533 | 49                 | 43 | 37 |

## SPECIFICATIONS

TREAD ROLLERS: 1.9" dia. x 16 ga. steel, model 196S grooved.

DRIVE BELT: 3/16" dia., polyurethane belts. Nominal 15 lbs. per roller drive.

DRIVE SHAFT: 1" dia. C1018 cold rolled steel shaft.

COUPLINGS: Couplings located both ends or one end only. Specify where couplings required.

BEARINGS: Precision, lubricated, ball bearing units with composite housings.

SPEED: 60 FPM constant.

BED: 7" x 1-1/2" x 12 ga. formed steel channel frame.

MOTOR DRIVE: 1/3 HP, 230/460/3, 60 cycle, ODP right angle gear motor.

CROSS OVER DIRECTION: Specify "cross over to right hand" or "cross over to left hand".

ELECTRICAL CONTROLS: Optional.

## OPTIONAL EQUIPMENT

GUARD RAILS: 1-3/4" x 1" formed channel (model GC), adjusts horizontally to 8" wider than roller and vertically to 6" above roller; formed steel fixed (model FSG in 2", 4" & 6" heights; fixed channel (model FC); 1-1/2" angle (model GA1-1/2). See Conveyor Accessories.

FLOOR SUPPORTS: Supports, knee braces, casters, ceiling hangers and polytier supports available. See Conveyor Accessories.

CONVEYOR SPEED: Constant speed 15-120 FPM; DC variable speed; AC inverter variable speed. MINIMUM operating speed for line shaft conveyor is 30 FPM.

ELECTRICAL CONTROLS: Magnetic starter (one direction or reversible); Others available. Consult factory.



■ 3 week shipment