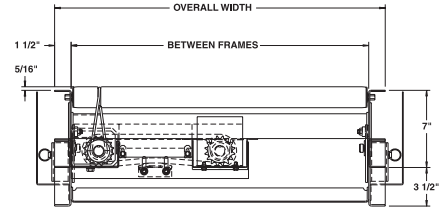


MODEL 796LSG LINE SHAFT GATE MODULE

Conveyor shown with optional supports



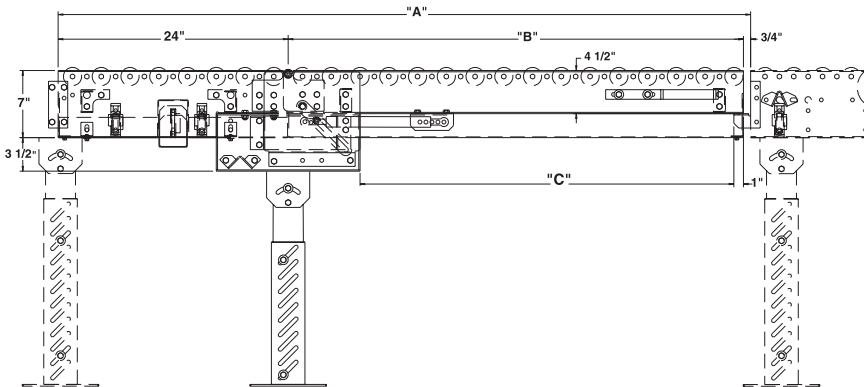
Model 796LSG offers the ultimate versatility--it is driven by 796LS so no drive is required and it offers operator accessibility eliminating dangerous walk-overs.



OPTIONAL EQUIPMENT

FLOOR SUPPORTS: Supports, knee braces, casters, polytier supports & ceiling hangers available. See Conveyor Accessories.

GUARD RAILS: Consult factory for guard rails to be used with line shaft gate module.



SPECIFICATIONS

TREAD ROLLERS: 1.9" dia. x 16 ga. steel, model 196S grooved.

DRIVE BELT: 3/16" dia., polyurethane belts. Nominal 15 lbs. per roller drive.

DRIVE SHAFT: 1" dia. C1018 cold rolled steel shaft, located on long side of spur.

COUPLINGS: Couplings located on horizontal sections only.

LIFT: Gas cylinder provides assist for raising/lowering.

BEARINGS: Precision, lubricated, ball bearing units with composite housings.

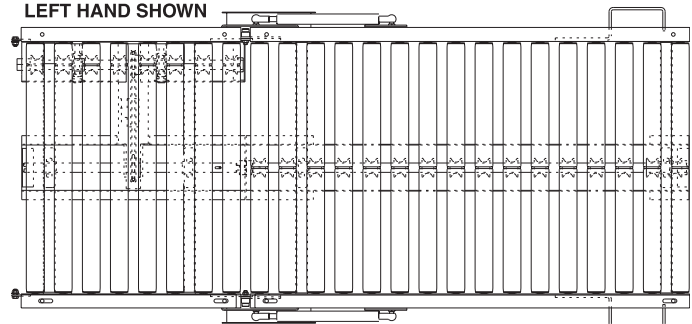
BED: 4-1/2" x 1-1/2" x 10 ga. formed steel channel frame on actual lift gate; 7" x 1-1/2" x 12 ga. on 2' horizontal section.

MOTOR DRIVE: Unit is designed to be driven by 796LS.

SPECIFY HAND: Specify if gate is left hand or right hand.

GATE LENGTHS/OPENINGS			
GATE	"A"	"B"	"C"
5'	60-1/4"	35-1/2"	26-7/8"
6'	72-1/4"	47-1/2"	38-7/8"
7'	84-1/4"	59-1/2"	50-7/8"

LEFT HAND SHOWN



■ 4 week shipment