

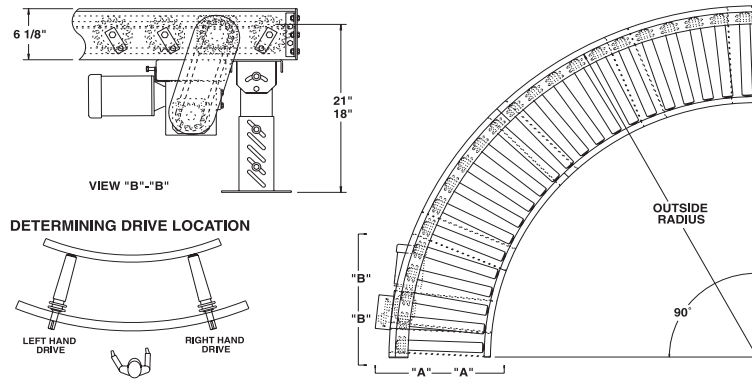
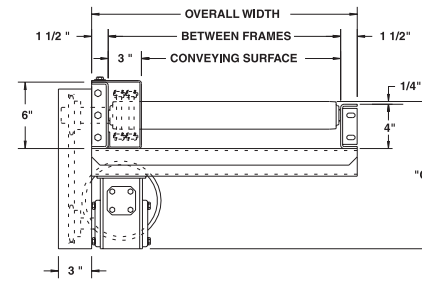
MODEL 251CDLRC HEAVY DUTY CHAIN DRIVEN LIVE ROLLER CURVE



Conveyor shown with optional supports

251CDLRC, heavy duty chain driven live roller curve, transports heavy unit loads. Heavy castings, drums and other loads not requiring product orientation may be effectively conveyed on this conveyor.

SPECIFY MODEL NUMBER PER EXAMPLE
251CDLRC-39-90-L
251CDLRC-(between frames)-(degree)-(left or right)



UNIT	90°		45°			
	BF	CONV. SURFACE	QTY. RLRS.	WT (lbs.)	QTY. RLRS.	WT (lbs.)
15"	12"	7'-1-1/2"	22	624	11	347
21"	18"	7'-1-1/2"	22	672	11	374
27"	24"	7'-1-1/2"	22	721	11	401
33"	30"	7'-1-1/2"	22	769	11	428
39"	36"	7'-1-1/2"	22	815	11	454
45"	42"	10'-3-3/4"	32	1244	16	672
51"	48"	10'-3-3/4"	32	1383	16	744
57"	54"	10'-3-3/4"	32	1531	16	827
63"	60"	10'-3-3/4"	32	1680	16	909

OPTIONAL EQUIPMENT

BED: Rollers on 4-1/2" centers on outside radius.
SPEED: Constant speed 1.5-60 FPM; DC variable speed; AC inverter variable speed. Other constant or variable speeds available.
NOTE: CAPACITY CHANGES WITH SPEED. 100 FPM MAX. WITH ROLLER-TO-ROLLER CHAIN DRIVE.

MOTORS: Available through 3 HP in TEFC, explosion proof, dirty duty, 115/230/1, 575/3, etc.

FLOOR SUPPORTS: Supports, knee braces, casters, and polytier supports available. See Conveyor Accessories.

*NOTE: Orientation of product may be affected because of straight rollers in curve. To maintain orientation, use tapered roller curve.

■ 4 week shipment



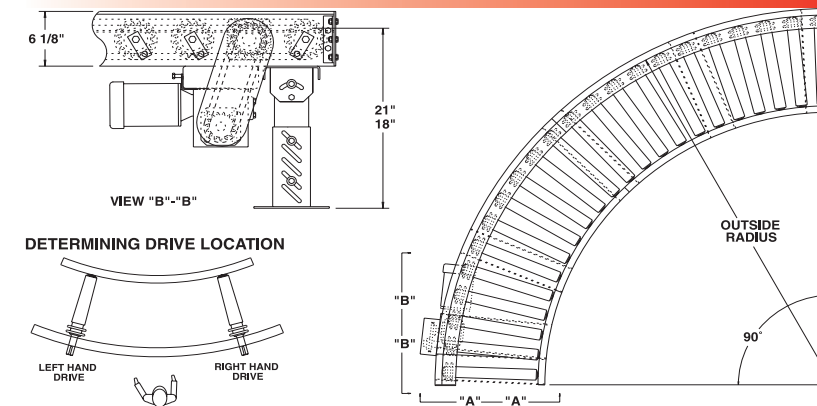
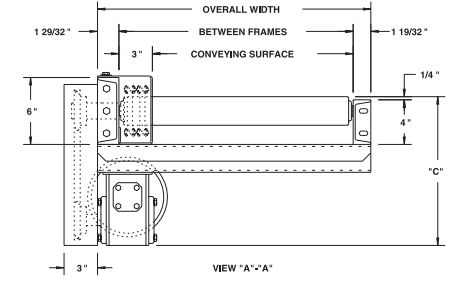
MODEL 297CDLRC HEAVY DUTY CHAIN DRIVEN LIVE ROLLER CURVE



Conveyor shown with optional supports

Model 297CDLRC features structural steel channel frames for conveying heavy unit loads. Heavy castings, drums and numerous other loads not requiring product orientation may be transported on this heavy duty chain driven live roller curve.

SPECIFY MODEL NUMBER PER EXAMPLE
297CDLRC-57-45-R
297CDLRC-(between frames)-(degree)-(left or right)



UNIT	90°		45°			
	BF	CONV. SURFACE	QTY. RLRS.	WT (lbs.)	QTY. RLRS.	WT (lbs.)
15"	12"	7'-1-1/2"	22	736	11	421
21"	18"	7'-1-1/2"	22	846	11	495
27"	24"	7'-1-1/2"	22	956	11	540
33"	30"	7'-1-1/2"	22	1066	11	750
39"	36"	7'-1-1/2"	22	1176	11	811
45"	42"	10'-3-3/4"	32	1625	16	872
51"	48"	10'-3-3/4"	32	1735	16	965
57"	54"	10'-3-3/4"	32	1845	16	1026

OPTIONAL EQUIPMENT

BED: Rollers on 4-1/2" centers on outside radius.
SPEED: Constant speed 1.5-60 FPM; DC variable speed; AC inverter variable speed. Other constant or variable speeds available.
NOTE: CAPACITY CHANGES WITH SPEED. 100 FPM MAX. WITH ROLLER-TO-ROLLER CHAIN DRIVE.

MOTORS: Available through 3 HP in TEFC, explosion proof, dirty duty, 115/230/1, 575/3, etc.

FLOOR SUPPORTS: Supports, knee braces, casters, and polytier supports available. See Conveyor Accessories.

*NOTE: Orientation of product may be affected because of straight rollers in curve. To maintain orientation, use tapered roller curve.

■ 4 week shipment

HP @ 35FPM	"C"
3/4	13"
1	13-1/4"
1-1/2	14-1/8"
2	15



OPTIONAL EQUIPMENT

BED: Rollers on 4-1/2" centers on outside radius.

SPEED: Constant speed 1.5-60 FPM; DC variable speed; AC inverter variable speed. Other constant or variable speeds available.
NOTE: CAPACITY CHANGES WITH SPEED. 100 FPM MAX. WITH ROLLER-TO-ROLLER CHAIN DRIVE.

MOTORS: Available through 3 HP in TEFC, explosion proof, dirty duty, 115/230/1, 575/3, etc.

FLOOR SUPPORTS: Supports, knee braces, casters, and polytier supports available. See Conveyor Accessories.

*NOTE: Orientation of product may be affected because of straight rollers in curve. To maintain orientation, use tapered roller curve.

■ 4 week shipment