

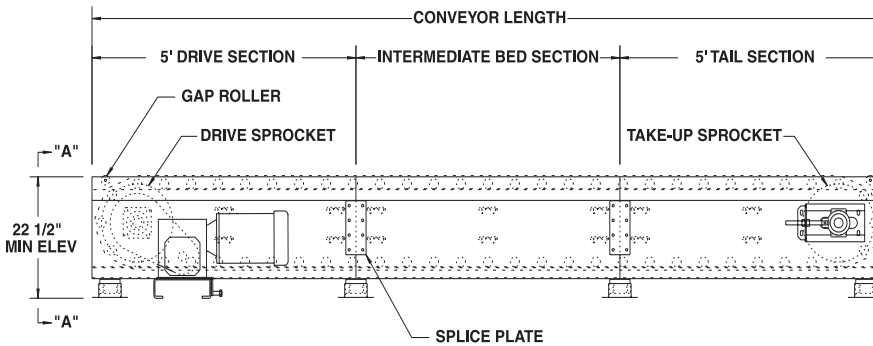
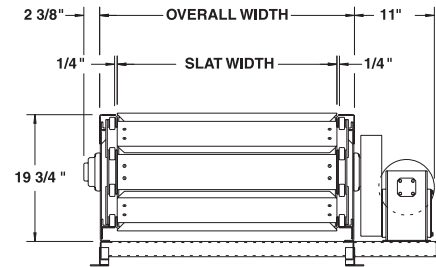
MODEL 608SL HEAVY DUTY SLAT CONVEYOR

Conveyor shown with optional supports



Model 608SL slat conveyor conveys unstable, irregular shaped objects and those with problem bottom surfaces.

It is commonly used in appliance and furniture handling and assembly line operations where product moves at a slow rate of speed through several operator work stations.



SLAT	25"	31"	37"	43"	49"
OAW	31"	37"	43"	49"	55"
OAL	UNIT WEIGHT (lbs.)				
10'	1801	1933	2065	2197	2329
20'	2993	3233	3472	3711	3951
30'	4186	4532	4879	5226	5572
40'	5378	5832	6286	6740	7194
50'	6570	7132	7693	8254	8815
60'	7763	8431	9100	9768	10437
70'	8955	9731	10507	11283	12058
80'	10147	11030	11914	12797	13680
90'	11340	12330	13321	14311	15301
100'	12532	13630	14728	15825	16923
#/FT.	119	130	141	151	162

SPECIFICATIONS

SLAT: 5-3/4" wide formed 7 ga. steel channel. Slat chain, 6" pitch @ 2500 lb. pull each

DRIVE: End side mount drive.

SPEED: 35 FPM, constant (maximum).

TAKE-UP: Screw type.

BED: 19-3/4" deep formed steel channel.

MOTOR DRIVE: 3/4 HP, 230/460/3, 60 cycle, ODP right angle gear motor.

DRIVE CHAIN: Sizes will vary with length of conveyor and chain pull required.

ELECTRICAL CONTROLS: Optional.

OPTIONAL EQUIPMENT

FLOOR SUPPORTS: See Conveyor Accessories for various elevations and types. Minimum 17" top of slat with floor mounted drive and 6" tooth sprocket.

CONVEYOR SPEED: Other constant or variable speed drives available.

MOTORS: Available through 5 HP in TEFC, explosion proof, dirty duty, 115/230/1, 575/3, etc.

ELECTRICAL CONTROLS: Manual start/stop push button switch; magnetic starter; photo eye; others available.

■ 6 week shipment

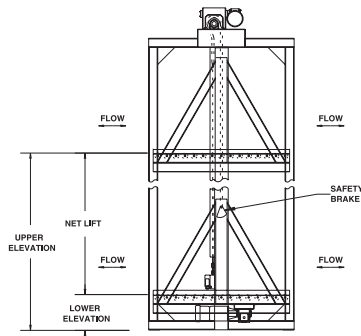


MODEL RVC / CVC VERTICAL CONVEYORS



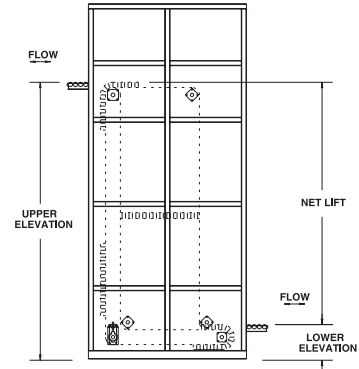
MODEL RVC
C-FLOW

RVC SIDE VIEW



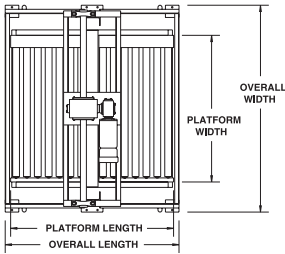
MODEL CVC
Z-FLOW

CVC-Z SIDE VIEW



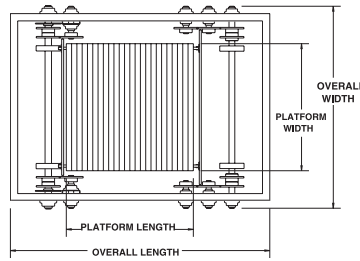
Model RVC above shown with optional blue powder paint.

RVC TOP VIEW



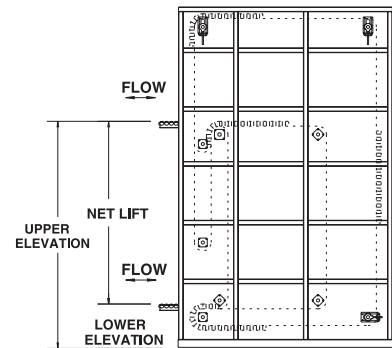
MODEL RVC
Z-FLOW

CVC TOP VIEW



MODEL CVC
C-FLOW

CVC-C SIDE VIEW



RVC SPECIFICATIONS

CAPACITY: Up to 3000 lbs.

FRAME: Heavy duty tubular construction.

DRIVE: (2) heavy strands of chain to raise and lower carrier platform.

RATE: Varies with unit height.

SPEED: 60 FPM (120 FPM maximum).

LOADING: One or more loading points may be selected at any level.

PLATFORM: Specify conveyor type.

GUARDS: Expanded metal guarding.

CONTROLS: Optional.

CVC SPECIFICATIONS

CAPACITY: Up to 3000 lbs.

FRAME: Heavy duty tubular construction.

DRIVE: (4) continuous roller chains driven by a suitably sized brake motor.

RATE: Up to 25 loads per minute.

SPEED: 60 FPM (100 FPM maximum).

LOADING: Automatic loading is accomplished by metering belt. Operator attention is not required.

PLATFORM: Size depends upon product.

GUARDS: Expanded metal guarding.

CONTROLS: Supplied as required.

CV. NO.	CARRIER PLATFORM DIMENSIONS		PLATFORM CAPACITY
	LENGTH	WIDTH	
60	3" INCR. UP TO 49-1/2"	18"-60"	200
80	4" INCR. UP TO 78"	24"-84"	600
100	5" INCR. UP TO 90-1/2"	30"-96"	1000
122	6" INCR. UP TO 105"	36"-96"	2000
143	8" INCR. UP TO 108"	36"-96"	3000



■ 8 week shipment