

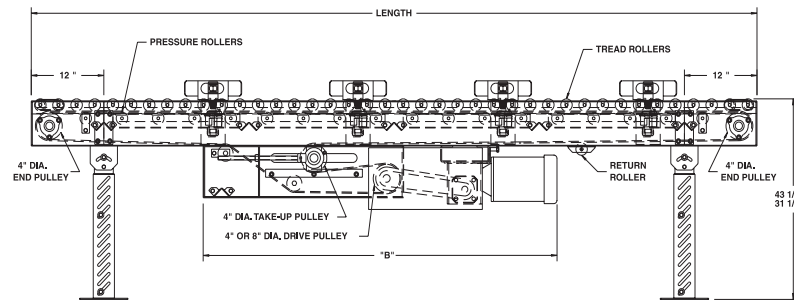
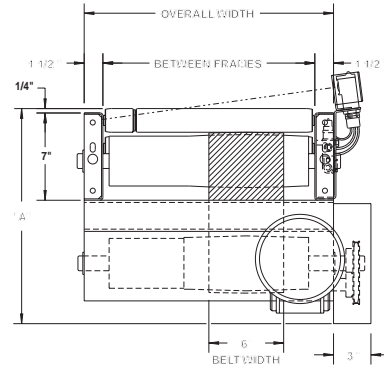
# MODEL SZ196ZPA SMART ZONE® MEDIUM DUTY ZERO PRESSURE LIVE ROLLER ACCUMULATOR



Conveyor shown with optional supports

Roach SZ196ZPA SMART ZONE® safely accumulates packages with zero back pressure utilizing zone singulation operation. Loads up to 125 lbs./ft. may be effectively handled with its unique design. This conveyor features NO minimum weight limitations. Roach SMART ZONE® replaces sensor rollers with photo electric sensors to accumulate products with previously difficult minimal weight restrictions and is easy to install.

**SMART ZONE:**  
Retroreflective photo eyes include a 24V DC power supply operated by a 110V AC input.



| HP@<br>60 FPM | "A" MAX |         | "B" MAX   |           |
|---------------|---------|---------|-----------|-----------|
|               | 4" DRV. | 8" DRV. | 4" DRV.   | 8" DRV.   |
| 1/3           | 16-5/8" | 17-5/8" | 58-5/32"  | 58-5/32"  |
| 1/2           | 16-5/8" | 17-5/8" | 58-5/32"  | 58-5/32"  |
| 3/4           | 17"     | 17-5/8" | 58-25/32" | 58-25/32" |
| 1             | 17-1/4" | 17-5/8" | 59-17/32" | 59-17/32" |
| 1-1/2         | 18-1/8" | 18-1/8" | 61-21/32" | 61-21/32" |
| 2             | 19"     | 19"     | 62-21/32" | 62-21/32" |

## SPECIFICATIONS

**TREAD ROLLERS:** 1.9" dia. x 16 ga. steel, model 196S.

**PRESSURE ROLLERS:** 1.9" dia. x 16 ga. steel, model 196S; 8" BF with 6" wide belt.

**BELTING:** 6" wide black PVC-120 COS.

**DRIVE PULLEY:** 4" dia. with 1-3/16" dia. shaft or 8" dia. with 1-7/16" dia. shaft, both crowned and fully lagged.

**END PULLEY:** 4" dia., crowned, with 1-3/16" dia. shaft.

**RETURN ROLLERS:** 1.9" dia. x 16 ga. steel, model 196S, adjustable.

**BEARINGS:** All pulley bearings are precision, heavy duty, lubricated, ball bearing units with cast iron housings.

**SPEED:** 60 FPM, constant.

**ACCUMULATION:** Zone singulation operation; 2'-0" long zones. 1'-0" of live roller over end plates at each end of conveyor remains "live" during operation (# of zones x zone length + 2' = overall conveyor length). Zones are pneumatically actuated using photo electric sensors.

**BED:** 7" x 1-1/2" x 12 ga. channel frame slotted for tread rollers to pop-out. When unit is installed at 7'-0" elevation or higher, rollers must be retained in conveyor frame. Specify desired elevation. Bed sections attached with couplings and floor supports.

**FRL:** Unit is provided with filter, regulator, lubricator with 1/4" ports.

**PNEUMATIC ACTUATION:** Maximum air line pressure should not exceed 30 PSI.

**SQUARING RODS:** Adjustable rods on underside of bed allow frame to be squared for improved belt tracking and are standard on all units over 30'.

**MOTOR DRIVE:** 1/3 HP, 230/460/3, 60 cycle, ODP right angle gear motor.

**ROLLER CHAIN:** Drive pulley is driven by No. 50 roller chain for 1-1/2 HP or less and No. 60 chain on larger drives. Chain take-up provided on motor base.



**WARNING**  
Pop-out rollers should be retained in frame if unit is elevated to 7'-0" and above.

50'-0" lengths and under are equipped with 4" dia. drive pulley; over 50'-0" includes 8" dia. drive pulley

## SPECIFICATION TABLE

■ 3 week shipment

| CONVEYOR LENGTH |     |      | 10'  | 20'  | 30'  | 40'  | 50'  | 60'  | 70'  | 80'  | 90'  | 100' | Deduct   |
|-----------------|-----|------|--|------|------|------|------|------|------|------|------|------|----------|
| BF              | OAW | BELT | UNIT WEIGHTS (lbs.) with 3" Roller Centers (For other centers, deduct weights below) |      |      |      |      |      |      |      |      |      | Per Foot |
| 15"             | 18" | 6"   | 520  | 824  | 1127 | 1431 | 1734 | 2038 | 2341 | 2645 | 2948 | 3252 | 30       |
| 19"             | 22" | 6"   | 576  | 912  | 1248 | 1584 | 1920 | 2255 | 2591 | 2927 | 3263 | 3599 | 34       |
| 21"             | 24" | 6"   | 605  | 956  | 1308 | 1660 | 2012 | 2364 | 2716 | 3068 | 3420 | 3772 | 35       |
| 25"             | 28" | 6"   | 661  | 1045 | 1429 | 1813 | 2198 | 2582 | 2966 | 3350 | 3734 | 4119 | 38       |
| 27"             | 30" | 6"   | 689  | 1089 | 1490 | 1890 | 2290 | 2691 | 3091 | 3491 | 3892 | 4292 | 40       |
| 33"             | 36" | 6"   | 774  | 1222 | 1671 | 2120 | 2568 | 3017 | 3466 | 3915 | 4363 | 4812 | 45       |
| 39"             | 42" | 6"   | 858  | 1355 | 1852 | 2349 | 2846 | 3344 | 3841 | 4338 | 4835 | 5332 | 50       |

Deduct the following weights (lbs.) for other than 3" centers

| Tread Roller Centers | 15" BF |         | 19" BF |         | 21" BF |         | 25" BF |         | 27" BF |         | 33" BF |         | 39" BF |         |
|----------------------|--------|---------|--------|---------|--------|---------|--------|---------|--------|---------|--------|---------|--------|---------|
|                      | Per 5' | Per 10' | Per 5' | Per 10' | Per 5' | Per 10' | Per 5' | Per 10' | Per 5' | Per 10' | Per 5' | Per 10' | Per 5' | Per 10' |
| 4"                   | -23    | -45     | -28    | -55     | -30    | -60     | -35    | -69     | -37    | -75     | -45    | -90     | -53    | -105    |
| 6"                   | -45    | -90     | -54    | -108    | -60    | -120    | -69    | -138    | -75    | -150    | -90    | -180    | -105   | -210    |

## OPTIONAL EQUIPMENT

**ACCUMULATION:** 30" and 60" zones available in 3" and 6" roller centers; 40" and 60" zones available in 4" roller centers.

**SLUG RELEASE:** Products may be slug released rather than individual product release in normal zone singulation; accumulation mode will not be disturbed when slug release option utilized.

**BELTING:** 6" wide black PVC-150; 12" wide PVC-120.

**END DRIVE:** Mounted underneath conveyor. Minimum possible height is 20" TOR for underneath mounted end drive. Belt take-up required for end drive (if substituting end drive for center drive).

**AUXILIARY TAKE-UP:** Provides 24" of belt take-up; specify location. See Power Accessories.

**FLOOR SUPPORTS:** Supports, knee braces, casters and polytier supports available. See Conveyor Accessories.

**CEILING HANGERS:** 5/8" dia. threaded rod with hardware to attach rods to conveyor. Provides 6' clearance between ceiling and TOR (furnished in place of floor supports). See Conveyor Accessories.

**GALVANIZED ROLLERS:** Both tread and pressure rollers available in galvanized steel, model 196G. Specify tread only or both tread and pressure rollers.

**192S TREAD ROLLERS:** 1.9" dia. x 12 ga. steel tread rollers, model 192S, available in model SZ192ZPA SMART ZONE®.

**SPEED:** Constant speed 15-120 FPM; DC variable speed; AC inverter variable speed. Other constant or variable speeds available. NOTE: CAPACITY CHANGES WITH SPEED.

**MOTORS:** Available through 3 HP in TEFC, explosion proof, dirty duty, brake motor, 115/230/1, 575/3, etc.

**DEFUSED SMARTZONE:** Photoeyes mounted below tread rollers.



PHOTO SENSOR MOUNT

